



Vision to Reality

Transforming the Productivity and Competitiveness of Industry

Glenn Feltham
Sue Fitzsimmons
Brian Pardell
Jelena Bajic

A LEADING POLYTECHNIC COMMITTED TO STUDENT SUCCESS



Glenn Feltham
President & CEO



Sue Fitzsimmons
VP Academic & Provost



Brian Pardell
AVP Business Development & Sales



Jelena Bajic
Director Research Operations




WE
ARE
ESSENTIAL
TO ALBERTA





The journey





1. How can a post-secondary organization overcome the challenges of imagining, constructing and inhabiting purpose-built industry space within an academic environment?





Imagining

- purpose built for industry
- flexible and evolving
- collaborative



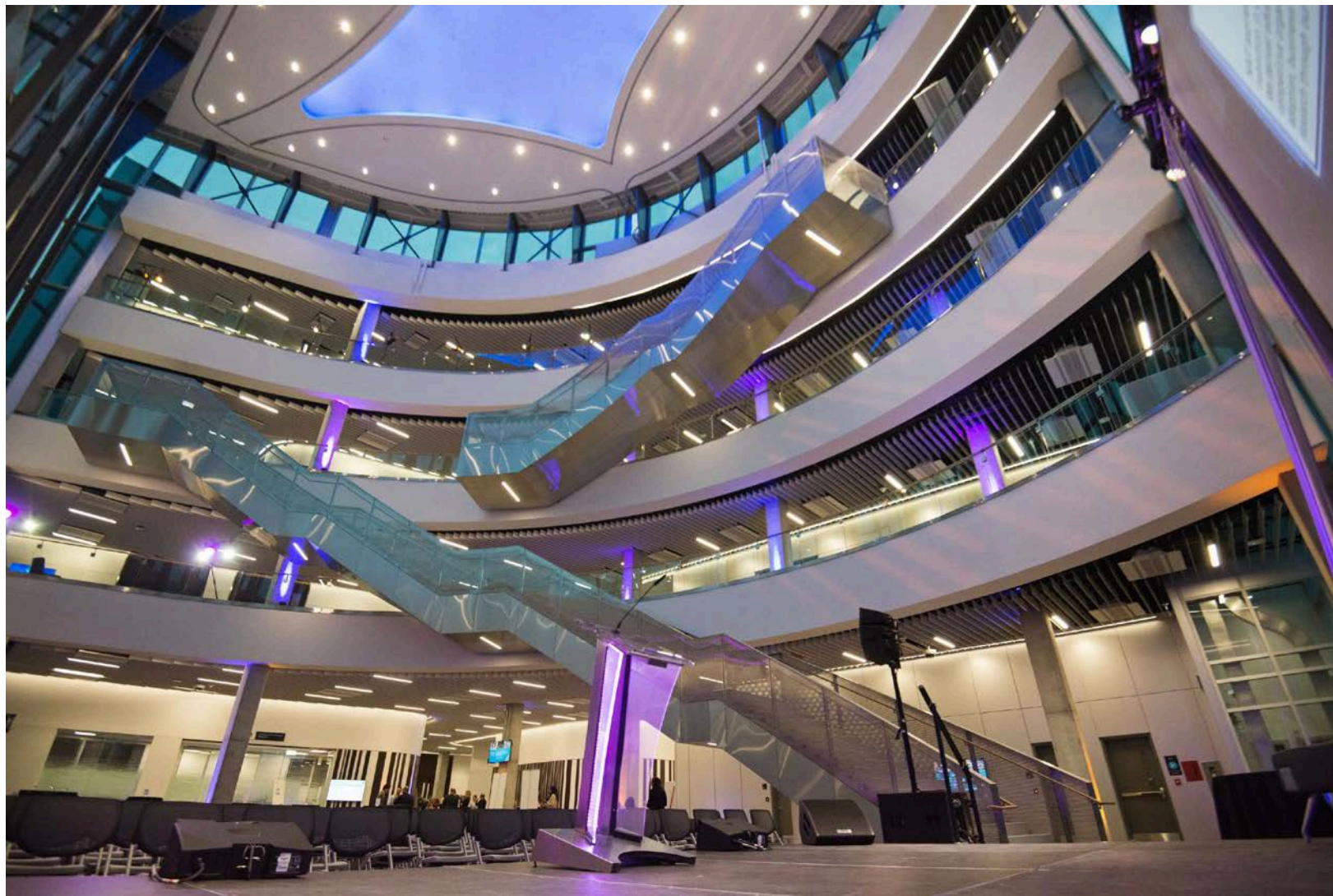
**WE
ARE** **ESSENTIAL
TO ALBERTA**





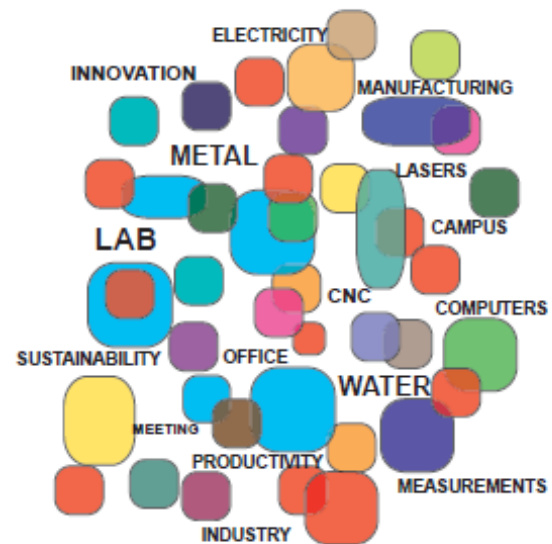
WE ARE ESSENTIAL
TO ALBERTA





WE ARE ESSENTIAL
TO ALBERTA





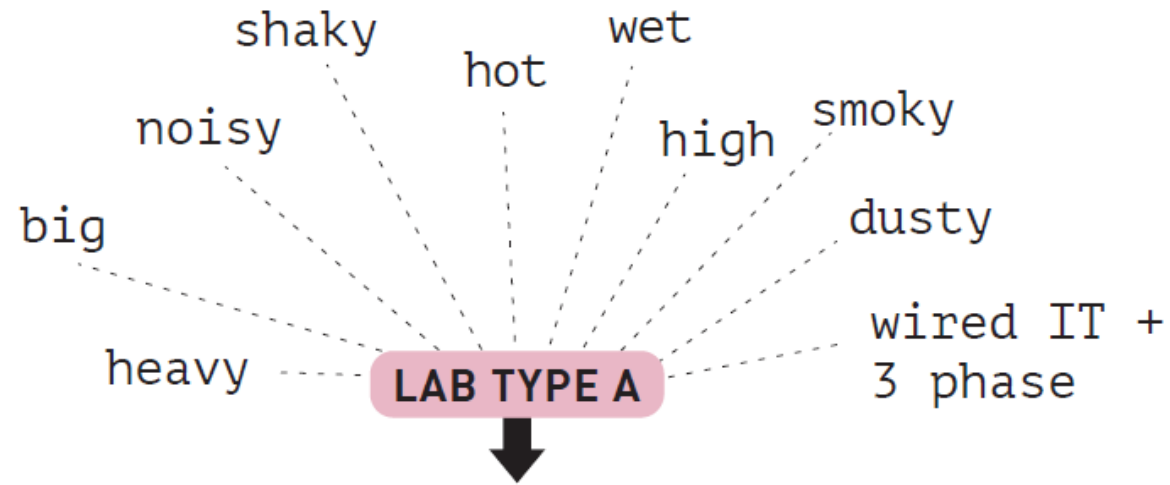
LAB TYPE A

LAB TYPE B



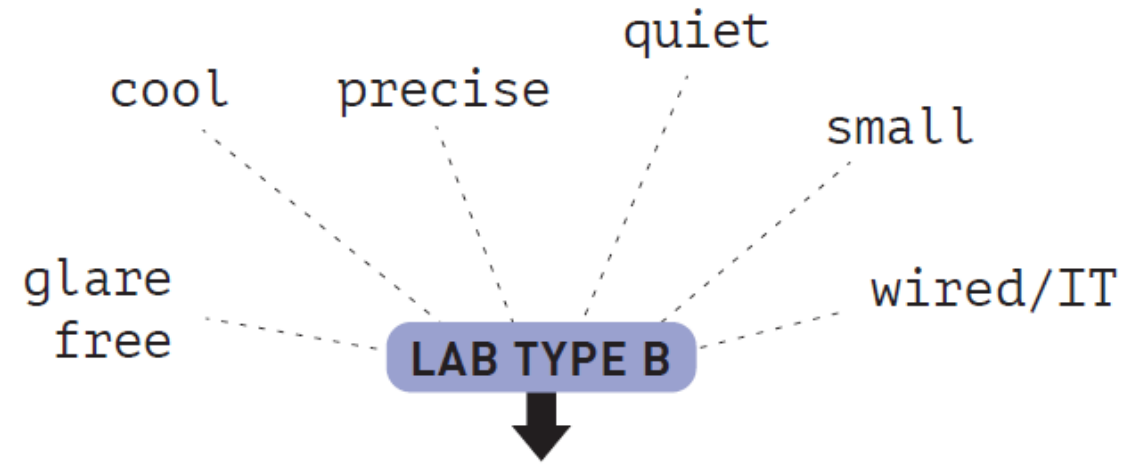
WE ARE ESSENTIAL TO ALBERTA





- LARGE SCALE TESTING LAB
 - NON-DESTRUCTIVE & DESTRUCTIVE TESTING LAB
 - MATERIALS ALTERATION LAB
 - 3D PRINTING LAB
 - TESTING & MEASUREMENTS LAB
- SMART BUILDING TECHNOLOGY LAB
 - ELECTRICAL INNOVATION LAB
 - WATER TECHNOLOGY LAB
 - FUTURE APPLIED RESEARCH DEVELOPMENT LAB





- FLEXIBLE TRACHING
- BREAKOUT ROOMS
- MEETING ROOMS
- ELECTRONICS & LASER LAB
- FUTURE TECHNOLOGY LAB

- VISITING LAB SPACE
- RESOURCE MANAGEMENT LAB
- CIM LAB
- COMPUTER TRAINING LABS
- UAV & AVG LAB

- ELECTRONICS SHOP
- LOUNGE SPACE
- OFFICE SPACE
- CONFERENCE ROOM
- FOOD SERVICE



**ESSENTIAL
TO ALBERTA**

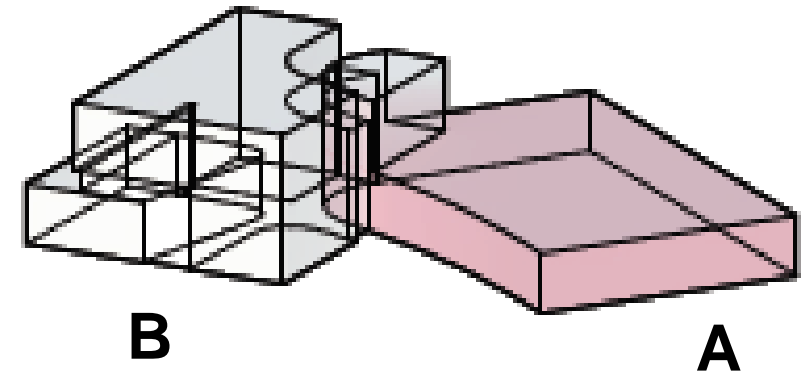


Constructing



Concurrent engineering


A method of designing and developing products, in which the different stages run simultaneously, rather than consecutively. It decreases product development time and also the time to market, leading to improved productivity and reduced costs.





Inhabiting

applied research for industry	academic scholarship
A collaboration between an industry partner and NAIT	May or may not be collaborative
The research questions are led by the industry partner	The research questions are led by the academic staff member
The research is done by a professional, industry researcher who is employed by NAIT, supported by grant funding	The research is done by the academic staff member as part of their academic role
The intellectual property is owned by the industry partner	The intellectual property is owned by the academic staff member



2. How can leaders in large, highly structured organizations be supported to innovate and imagine new visions and approaches to working with industry?





New Visions and Approaches

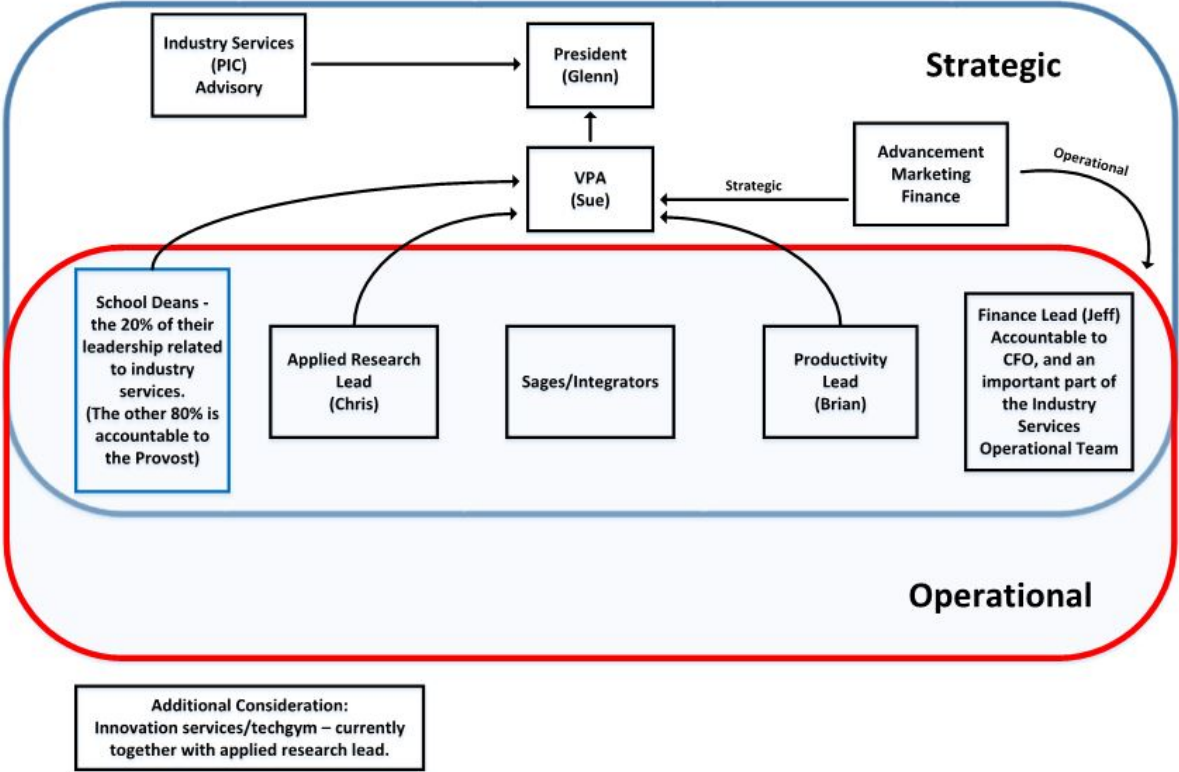






NAIT Industry Services (PIC) Accountability Structure

The arrows in this diagram represent lines of accountability, recognizing formal reporting lines may be different.





PRODUCTIVITY & INNOVATION CENTRE

The place industry comes to succeed.

INCREASING INDUSTRY COMPETITIVENESS

PIC will help industry (B2B) become more competitive through the provision of 6 integrated services focused on productivity, acceleration & applied research.

ACCELERATION

PRODUCTIVITY

1. EDUCATION FOR PRODUCTIVITY

ESTABLISHED AND GROWING

Helping industry clients learn & apply the foundations of productivity

FEE FOR SERVICE

2. PRODUCTIVITY SERVICES

DEVELOPING

Working with industry clients to analyze & implement productivity solutions

FEE FOR SERVICE

3. BUSINESS INNOVATION SERVICES

DEVELOPING

Working with industry clients to help them innovate within their business

FEE FOR SERVICE

4. PRODUCT DEVELOPMENT SERVICES

DEVELOPING

Working with industry clients to imagine, develop & test new products, or improve existing products

FEE FOR SERVICE

APPLIED RESEARCH

5. INDUSTRY-DRIVEN RESEARCH

ESTABLISHED AND GROWING

Working with industry clients to address their challenges through applied research

GRANT & INDUSTRY FUNDED

6. TECH GYM

DEVELOPING

Providing managed access to NAIT expertise & equipment

FEE FOR SERVICE

WE ARE ESSENTIAL TO ALBERTA





PRODUCTIVITY & INNOVATION CENTRE

The place industry comes to succeed.

INCREASING INDUSTRY COMPETITIVENESS

PIC will help industry (B2B) become more competitive through the provision of 6 integrated services focused on productivity, acceleration & applied research.

technology adoption

product innovation

business innovation

industry-driven research

Helping industry clients learn & apply the foundations of productivity
FEE FOR SERVICE

Helping industry clients to analyze & implement productivity solutions
FEE FOR SERVICE

Working with industry clients to help them innovate within their business
FEE FOR SERVICE

Working with industry clients to imagine, develop & test new products, or improve existing products
FEE FOR SERVICE

Helping industry clients to address their challenges through applied research
GRANT & INDUSTRY FUNDED

6. TECH GYM

DEVELOPING

Providing managed access to NAIT expertise & equipment

FEE FOR SERVICE

WE ARE ESSENTIAL TO ALBERTA





Other Industry Offerings

VALUE EXCHANGES

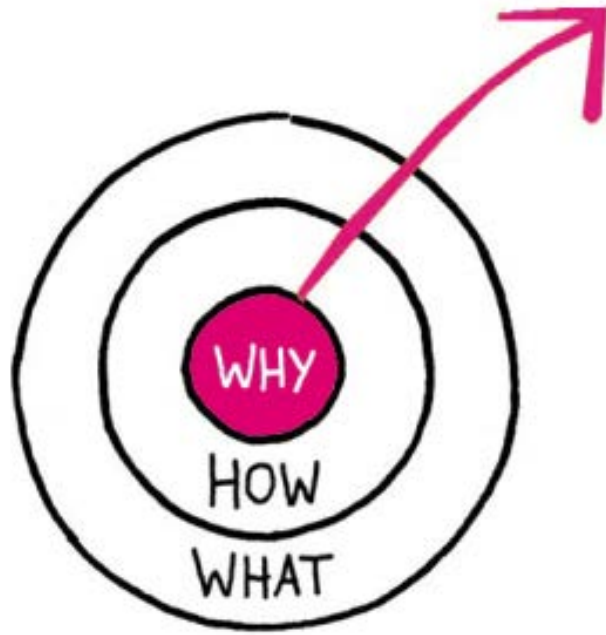
Advancement

**CONFERENCE
SERVICES**

*Retail & Ancillary
Services*

**INDUSTRY
ENGAGEMENT FOR
STUDENT LEARNING**

NAIT schools



Our commitment to help our industry partners to be among the best in the world and globally competitive is what motivates us. We are keenly focused on our industry customers, because we know that when industry succeeds, so do we all. NAIT's relevant and responsive solutions – and how we work with industry – benefits all Albertans through a strong and prosperous economy.



**WE
ARE** **ESSENTIAL
TO ALBERTA**






**WE
ARE** **ESSENTIAL
TO ALBERTA**





3. What is the role of industry advisors?





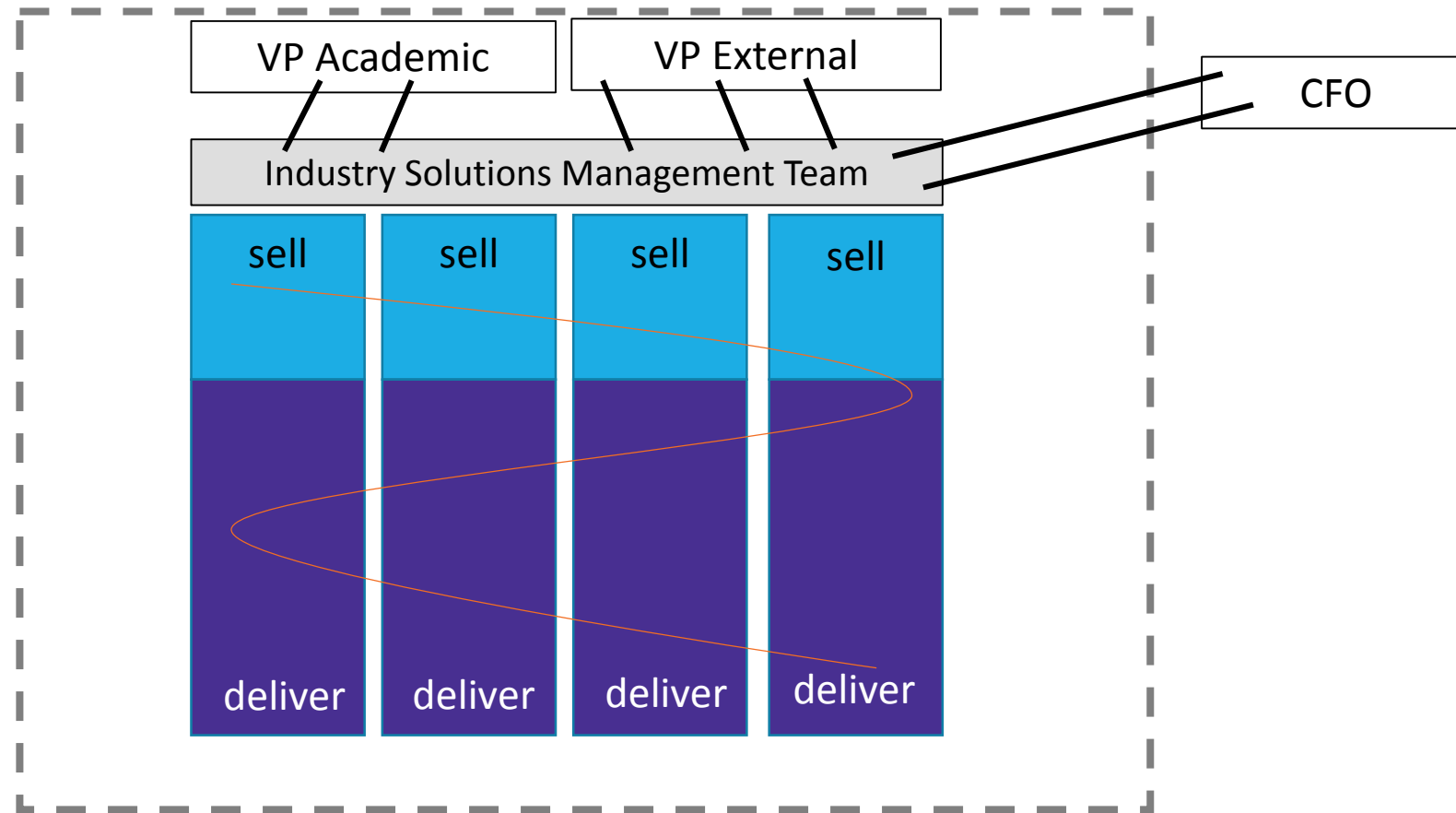
4. When is the right time to contemplate entirely new organizational structures and approaches to supporting innovation?

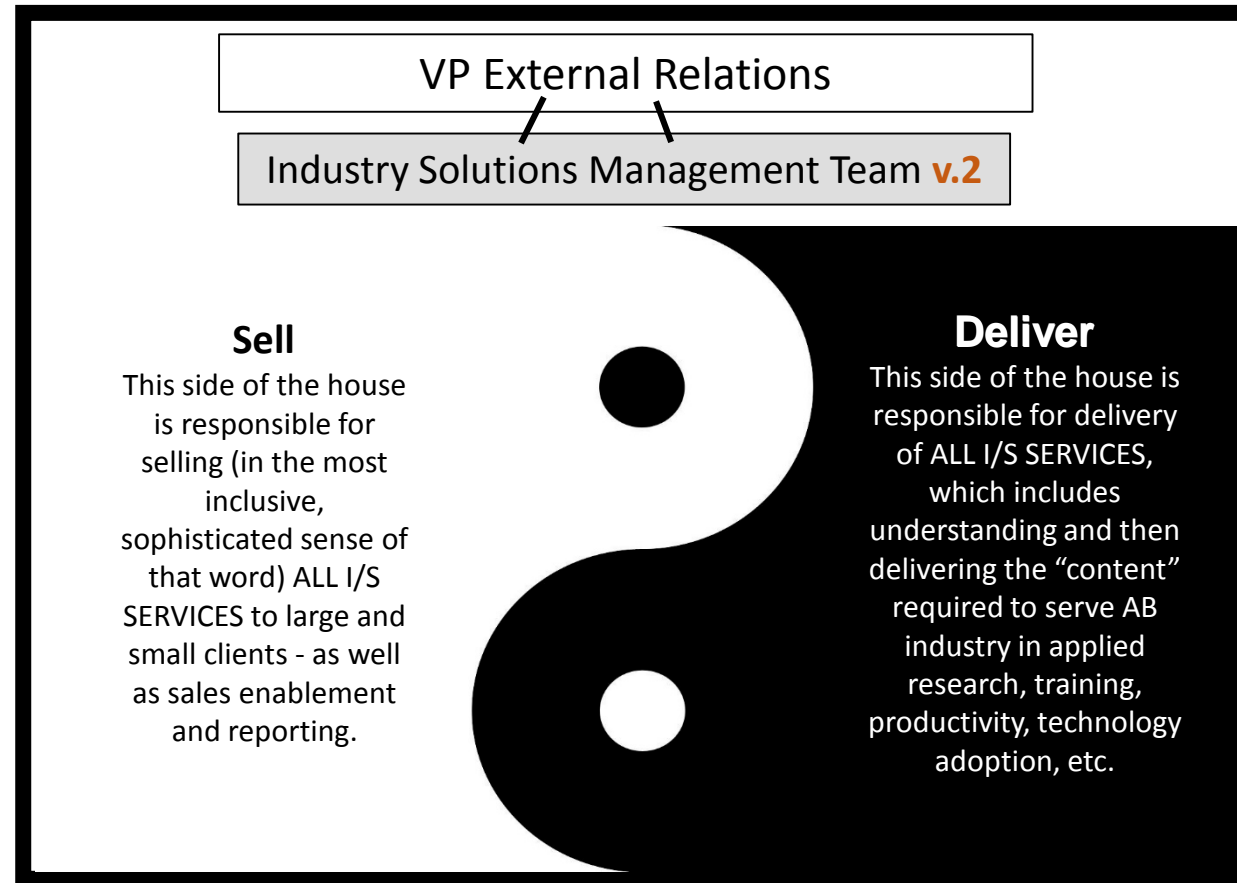


Shifting to A New Organizational Structure

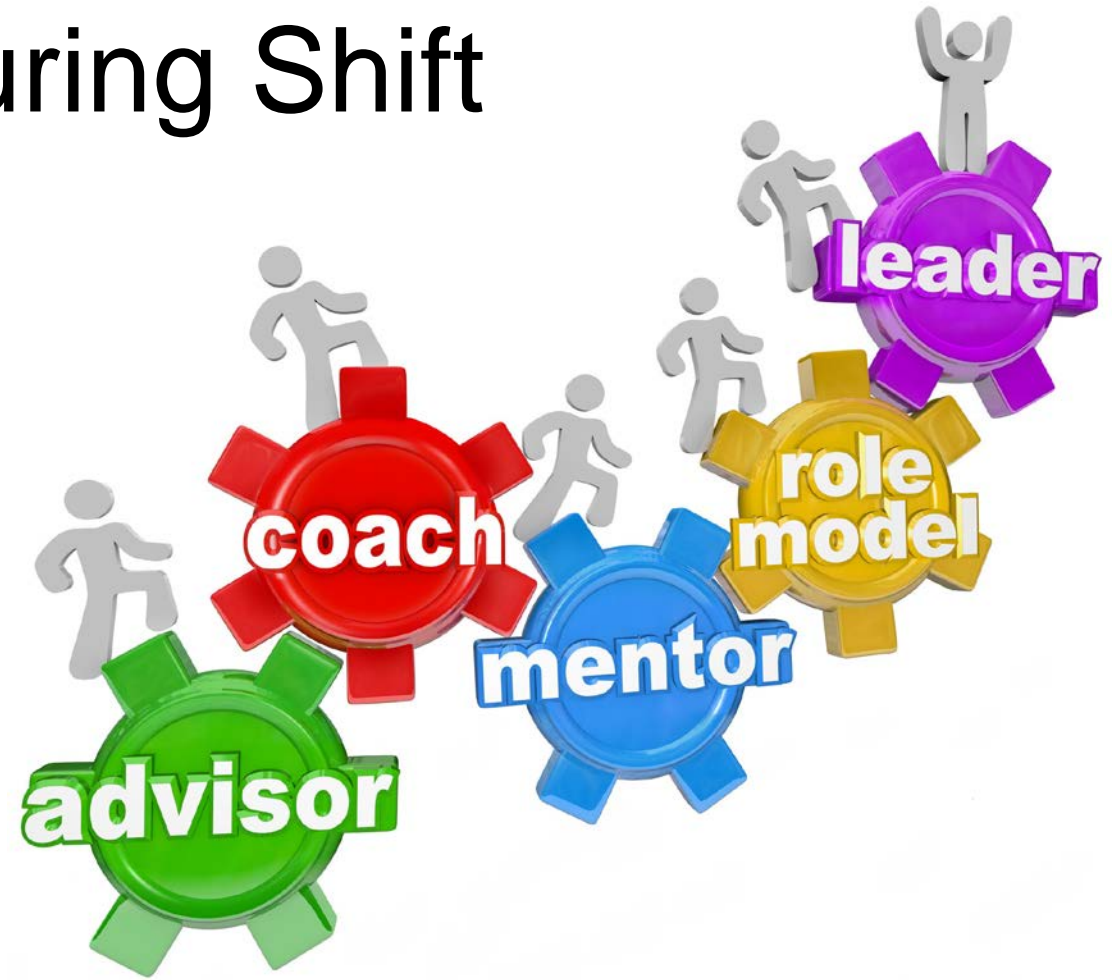








Role of Leadership during Shift





5. Is it possible to create a model that both supports individual companies and entire industries?





WE ARE ESSENTIAL
TO ALBERTA





Putting it all together ...



**WE
ARE** **ESSENTIAL
TO ALBERTA**





**WE
ARE** **ESSENTIAL
TO ALBERTA**







**WE
ARE** **ESSENTIAL
TO ALBERTA**





WE
ARE
ESSENTIAL
TO ALBERTA







corso 32





**WE
ARE** **ESSENTIAL
TO ALBERTA**





**WE
ARE** **ESSENTIAL
TO ALBERTA**





Technology Drives Baking Advancements

From robotics and extrusion to data analytics and new learning techniques, technical advancements are adding value in North American bakeries.

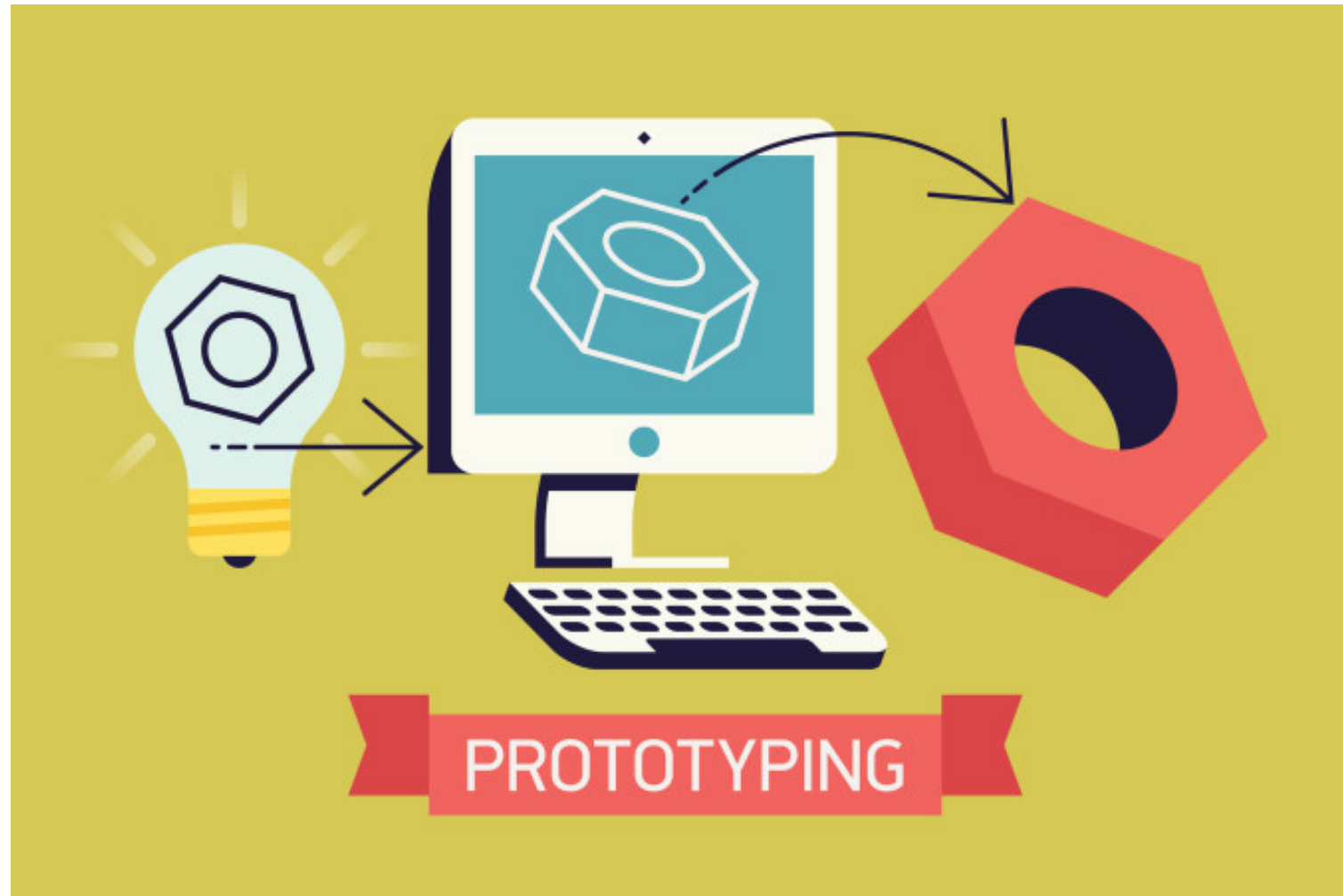
By Kevin T. Higgins, Managing Editor

Feb 06, 2018



WE
ARE
ESSENTIAL
TO ALBERTA

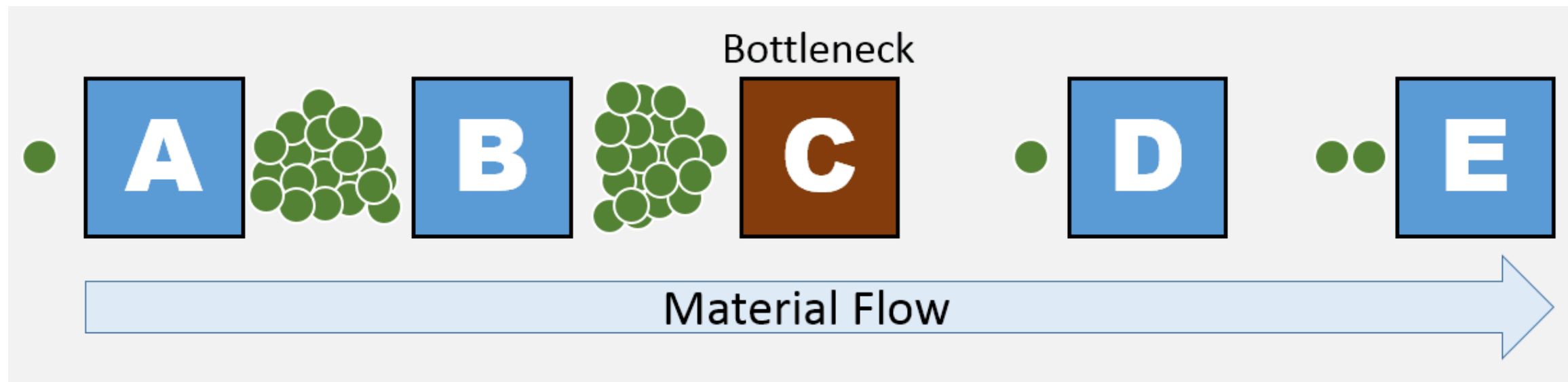






**WE
ARE** **ESSENTIAL
TO ALBERTA**







The International Association of Culinary Professionals.

**WE
ARE** **ESSENTIAL
TO ALBERTA**





?



WE
ARE **ESSENTIAL
TO ALBERTA**





Industry Solutions